

THE TAFT

MUSEUM OF ART

316 Pike Street

Cincinnati, OH 45202

513-241-0343

www.taftmuseum.org

Each symbol on the map represents an organization that used the educational services of the Taft during 2008-09.

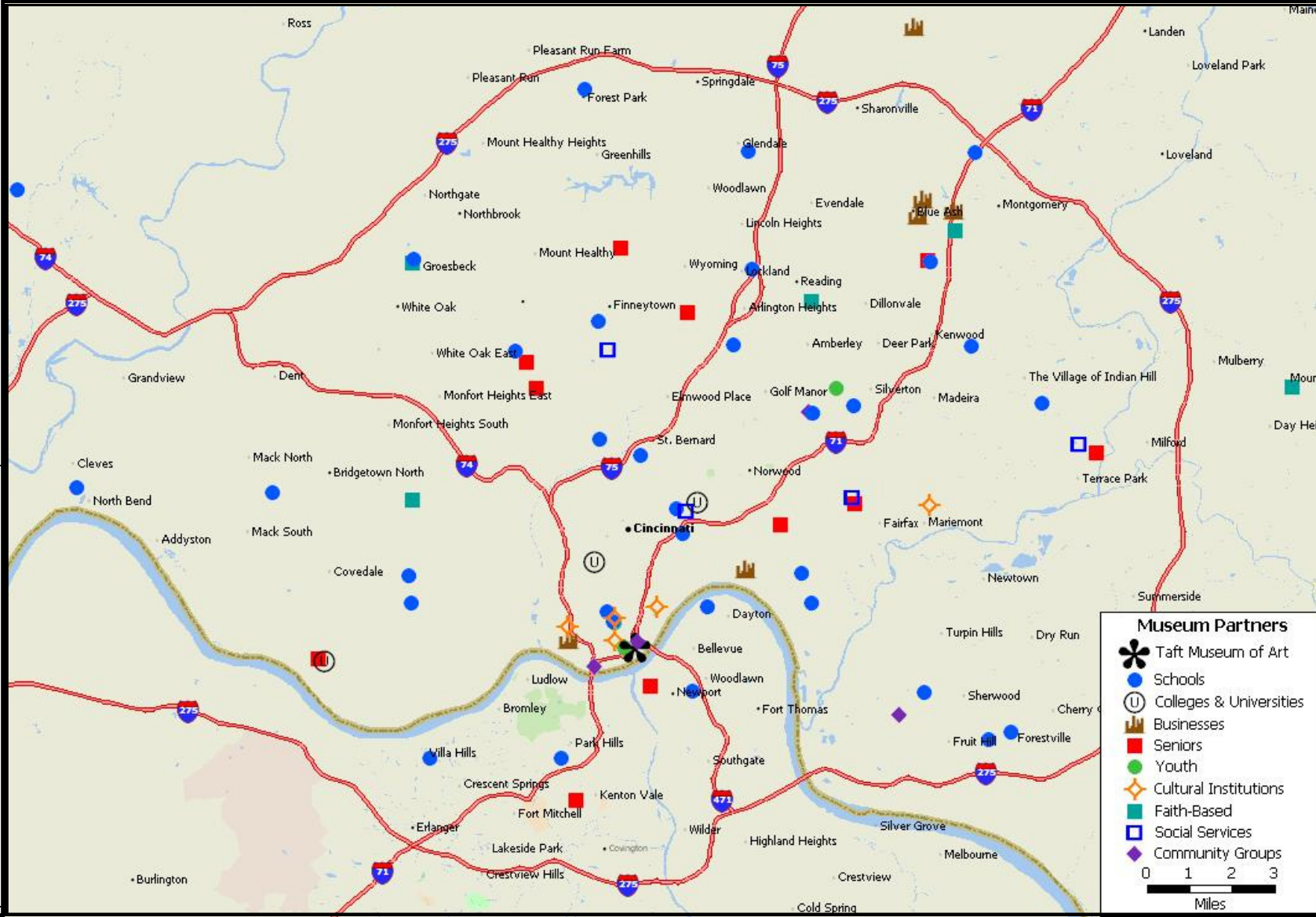
For more information about these maps please contact:

Andy Finch, Association of Art Museum Directors
afinch@aamd.org, 202-638-4530



Creation of these maps is sponsored in part by the National Endowment for the Arts.

The Taft Museum of Art welcomes people of every background to experience a world-renowned collection in a beautiful historic house. Through its intimate presentation of the Tafts' treasures and its engaging exhibitions, programs, and activities, the Museum creates enjoyment and learning opportunities for all. The Museum also brings art and teaching artists to schools across the metropolitan area and provides educational services to sixty community partners including businesses, senior groups, social service providers, and faith-based institutions.

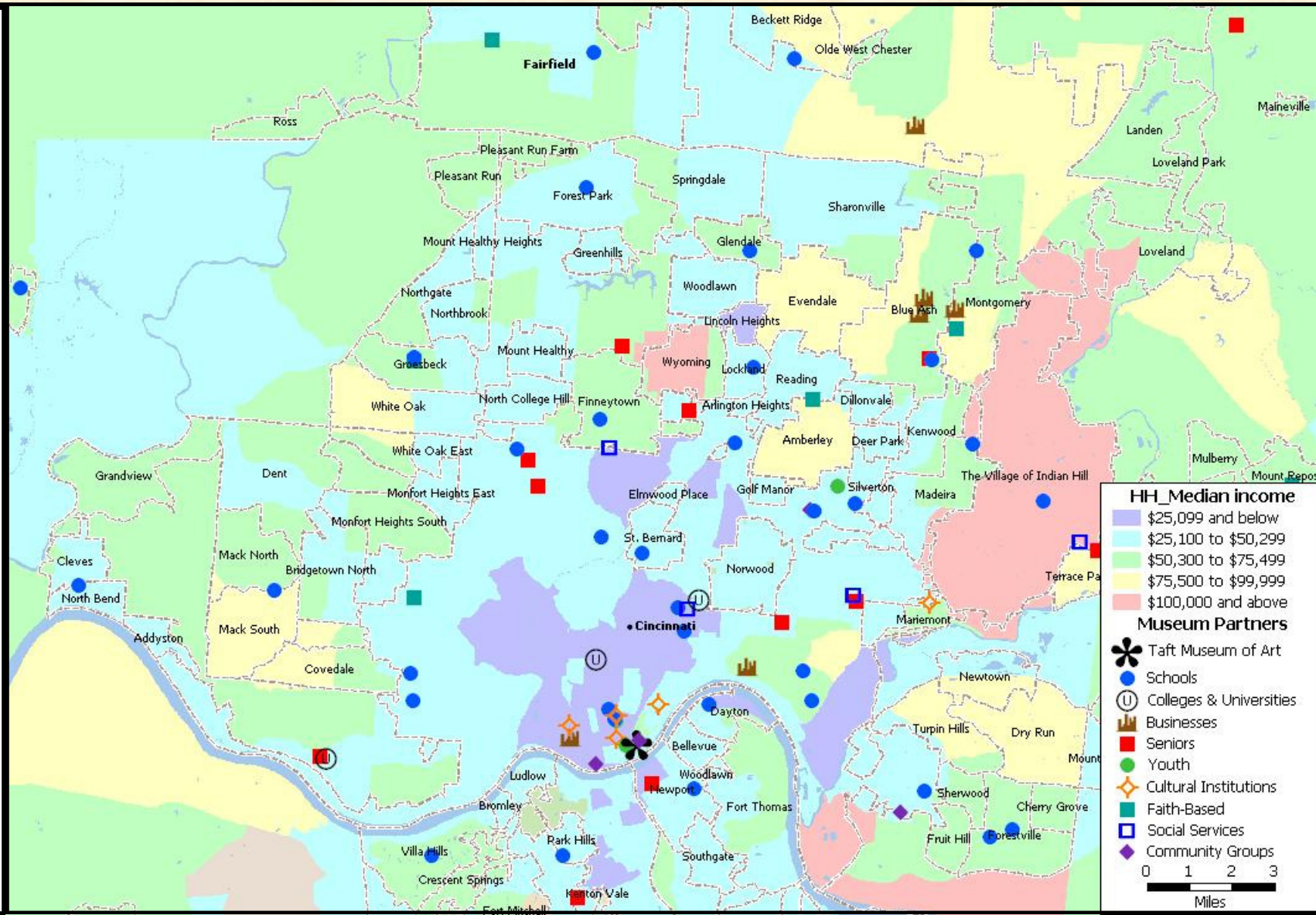


The Taft serves people of all income levels.

As the map below demonstrates, fully two-thirds of its partner organizations are located in the census tracts whose Median Household Income is less than \$50,299. (Source: U.S. Census Bureau)

The Taft respects the dignity of all people.

The Museum is committed to building an inclusive environment that welcomes and values diversity. This includes our staff, board of directors, volunteers and visitors.



THE TAFT serves partners all across Hamilton County.

BUSINESSES

Accent on Cincinnati
 Carolyn Fovel friends
 Mowry and Marty Inc.
 Ohio National Insurance
 Raymond James & Assoc.

COLLEGES & UNIVERSITIES

College of Mount St. Joseph
 University of Cincinnati
 Xavier University

COMMUNITY GROUPS

Bobbin Chicks Quilters
 Dirt Daubers Garden Club
 Hauck Garden Club
 Pleasant Ridge Men's Club

CULTURAL INSTITUTIONS

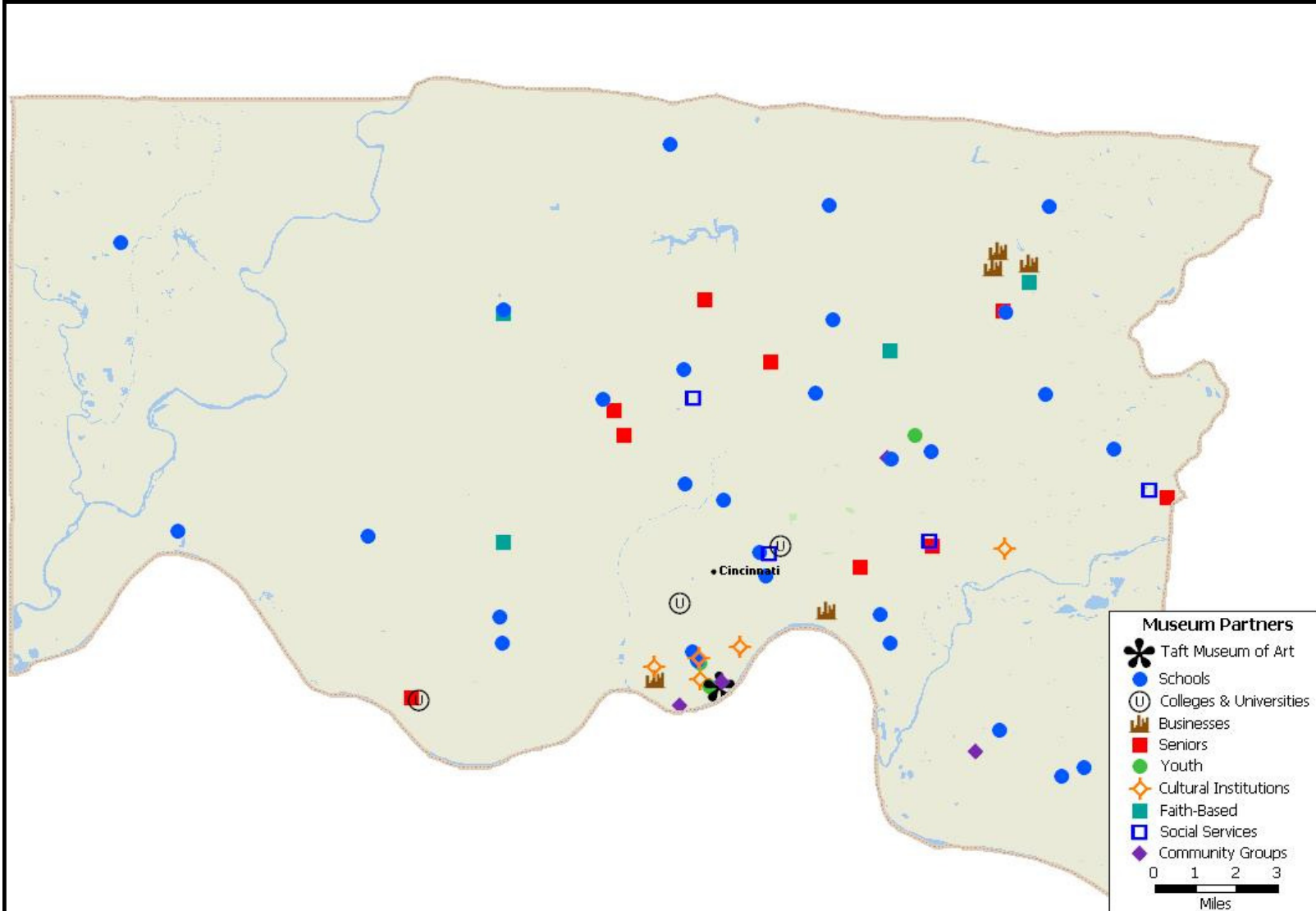
Cincinnati Art Museum
 Cinc. Museum Center Heritage Tour
 Enjoy the Arts
 Weston Art Gallery Docentitos
 Woman's Art Club of Cincinnati

FAITH-BASED

Mayerson Jewish Community Ctr.
 Montgomery Presbyterian Church
 Westwood United Methodist
 White Oak Presbyterian Church

SCHOOLS

Anderson High School
 Bethany School
 Cardinal Pacelli School
 Cincinnati Country Day School
 Colerain Senior High School
 Dater High School
 Guardian Angels School
 Harrison High School



Harrison High School
 Immaculate Heart of Mary School
 John Foster Dulles Elementary School
 Lockland Middle School
 Madeira Elementary School
 McAuley High School
 Nativity School
 North Avondale Elementary
 Roselawn Condon School
 St. Clement School
 St. Francis Seraph School
 St Peter Latin School for Boys

St. Teresa of Avila School
 St. Ursula Villa School
 St. Vivian School
 Summit Academy
 Sycamore Community Schools
 Sycamore High School
 Taylor High School
 Walnut Hills High School
 Winton Woods High School
 Woodford Paideia School

SENIORS

Blue Ash Nursing Home

Bridgeway Pointe Seniors
 Deupree House
 Eldermount Senior Center
 Llanfair Retirement Community
 Marjorie P. Lee Retirement Community
 Springfield Township Senior Cntr
 St. Thomas Episcopal Seniors
 Twin Towers Seniors

SOCIAL SERVICES

Hyde Park Health Center
 Salvation Army Booth Residence

Stepping Stones
 United Cerebral Palsy

YOUTH

Christ Church Youth Choir
 Kennedy Heights Arts Cntr Youth
 Mercy Franciscan at St. John Youth

THE TAFT serves partners in Ohio's 1st Congressional District.

BUSINESSES

Accent on Cincinnati

COLLEGES & UNIVERSITIES

College of Mount St. Joseph
University of Cincinnati
Xavier University

COMMUNITY GROUPS

Bobbin Chicks Quilters
Pleasant Ridge Men's Club

CULTURAL INSTITUTIONS

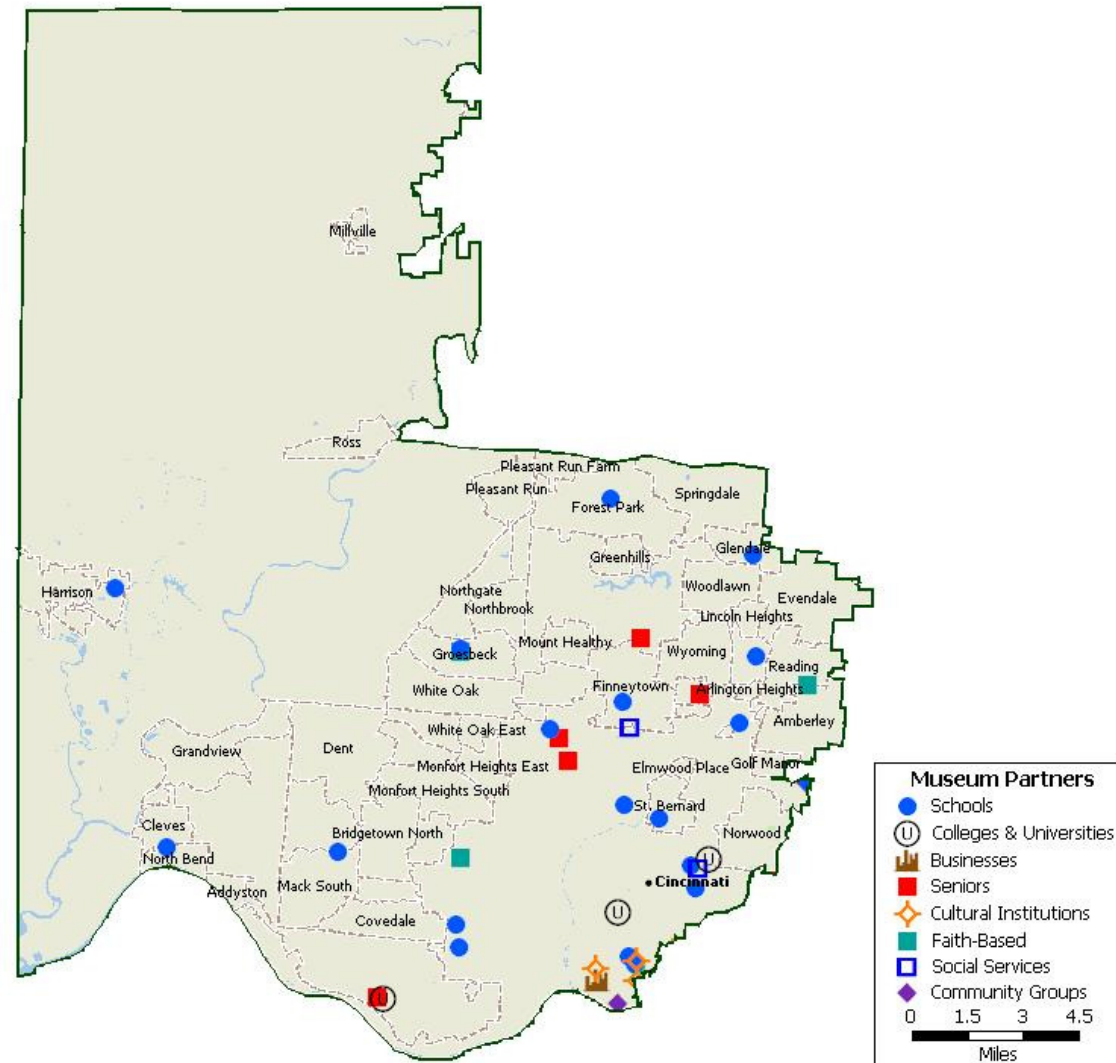
Cincinnati Museum Center
Heritage Tour
Enjoy the Arts

FAITH-BASED

Mayerson Jewish Community Center
Westwood United Methodist Church
White Oak Presbyterian Church

SCHOOLS

Bethany School
Colerain Senior High School
Dater High School
Harrison High School
John Foster Dulles Elementary School
Lockland Middle School



McAuley High School
Nativity School
North Avondale Elementary
Roselawn Condon School
St. Clement School
St. Francis Seraph School
St. Peter Claver Latin School for Boys
St. Teresa of Avila School
St. Vivian School
Summit Academy

Taylor High School
Walnut Hills High School
Winton Woods High School

SENIORS

Bridgeway Pointe Seniors
Eldermount Senior Center
Llanfair Retirement Community
Springfield Township Senior Center
Twin Towers Seniors

SOCIAL SERVICES

Salvation Army Booth Residence
United Cerebral Palsy

YOUTH

Mercy Franciscan at St. John Youth

THE TAFT serves partners in Ohio's 2nd Congressional District.

BUSINESSES

Carolyn Fovel friends
 Mowry and Marty Inc.
 Ohio National Insurance
 Raymond James & Assoc.

COMMUNITY GROUPS

Dirt Daubers Garden Club
 Hauck Garden Club

CULTURAL INSTITUTIONS

Cincinnati Art Museum
 Weston Art Gallery Docentitos
 Woman's Art Club of Cincinnati

FAITH-BASED

Montgomery Presbyterian Church
 St. Mark's Lutheran Church

SCHOOLS

Anderson High School
 Cardinal Pacelli School
 Cincinnati Country Day School
 Guardian Angels School
 Immaculate Heart of Mary School
 Madeira Elementary School
 St. Ursula Villa School
 Sycamore Community Schools
 Sycamore High School

Withamsville Tobasco Elem. School
 Woodford Paideia School

SENIORS

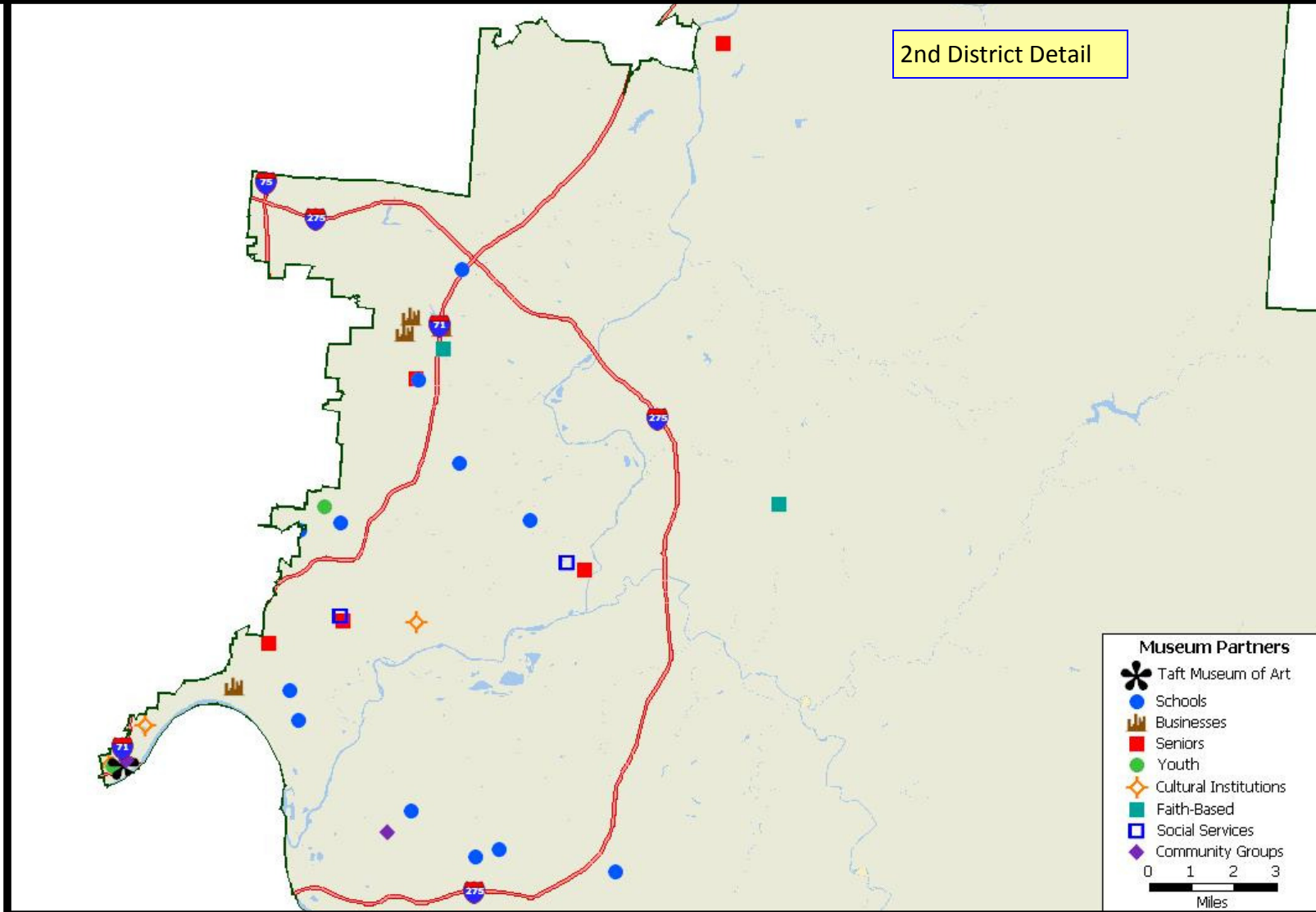
Blue Ash Nursing Home
 Deupree House
 Heritage at Miami Bluffs
 Lee Retirement Community
 St. Thomas Episcopal Church Seniors

SOCIAL SERVICES

Hyde Park Health Center
 Stepping Stones

YOUTH

Christ Church Cathedral Choir Youth
 Kennedy Heights Arts Center Youth



2nd District Detail

Museum Partners

- Taft Museum of Art
- Schools
- Businesses
- Seniors
- Youth
- Cultural Institutions
- Faith-Based
- Social Services
- Community Groups

0 1 2 3
Miles

TAFT MUSEUM OF ART: Education Programs

Using the Taft Museum of Art's collections, house, history and exhibitions, education programs foster multi-disciplinary learning opportunities for Greater Cincinnatians of all ages and backgrounds. Some of the Programs include:

Student Education

Field Trips are offered for Elementary, Middle and High School classes, as well as college groups and students with disabilities.

Artists Reaching Classrooms Student Art Exhibition (ARC). The annual ARC displays exceptional art in a variety of media by high school students participating in the program. It facilitates student interaction with professional artists, visits to artists' studios, examination of the relationship among artists, art, and society, assessment of their own art in light of working artists' methods and techniques, exploration of the Taft Museum of Art as a resource for artists, and participation in a professionally organized art exhibition.

Brownie and Girl Scout Programs

Architecture. Students learn the basics of architectural design and explore the neighborhood around the Taft Museum of Art to see different examples of styles and materials.

Wearable Art: Students observe portraits in the Taft Museum of Art's collection to see what kind of clothing was popular in history.

Art in 3D. Height, width, and depth are the three dimensions (or 3D) in sculpture, relief, pottery, mobiles, origami, and similar forms of art. Students look at 3D pieces in the Taft Museum of Art's collection and create different examples of art they can interact with.

Programs for Teachers

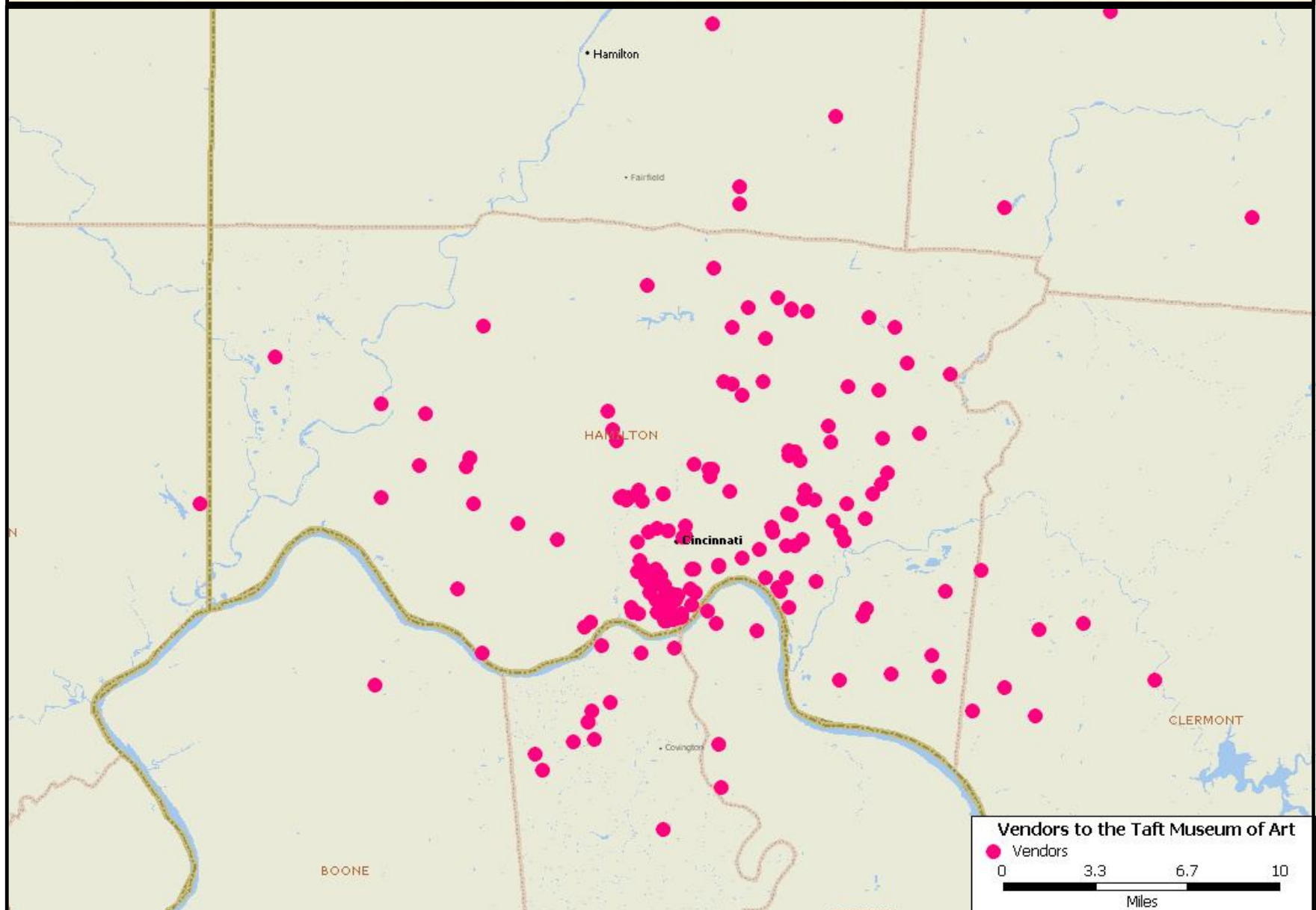
Lesson Plans are available for teachers to view and print, designed for art classes at the primary, intermediate and secondary levels.

Resource Center. The Corbett Educator Resource Center offers teacher resources and tools for educators and museum volunteers.

Duncanson Artist-in-Residence Program

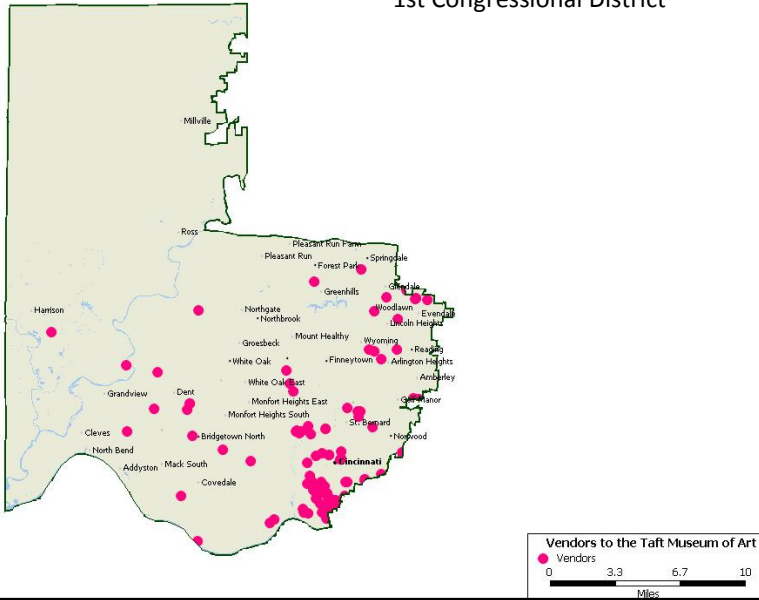
To honor the relationship that was established between African-American painter Robert S. Duncanson, who painted the murals in the Taft Museum's foyer, and Cincinnati art patron Nicholas Longworth, the Robert S. Duncanson Society of the Taft Museum of Art annually recognizes the achievements of contemporary African American artists through the Duncanson Artist-in-Residence program. For two weeks, an artist is selected to work in the community by offering public performances, workshops, and outreach to area schools.

The Taft Museum of Art purchased goods and services from 353 separate vendors during 2009, of which two-thirds are located in the state of Ohio.

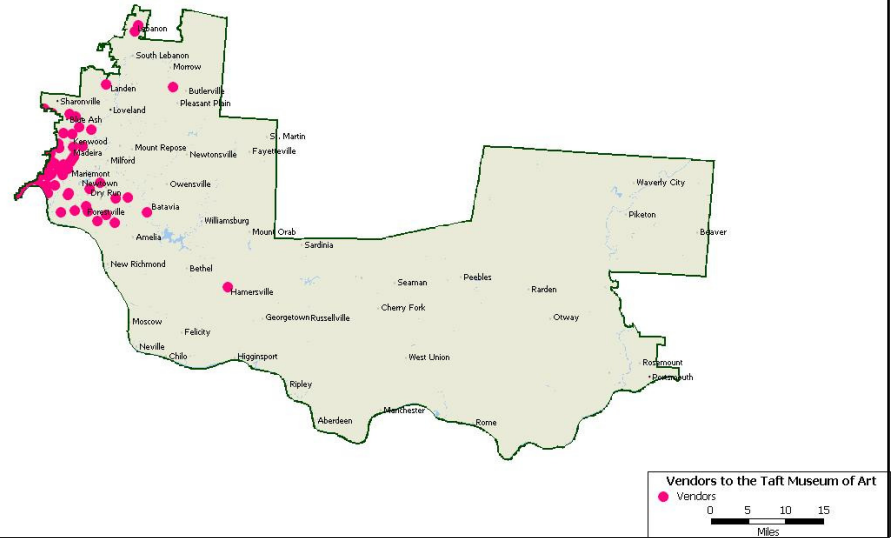


Taft Vendors in Selected Jurisdictions

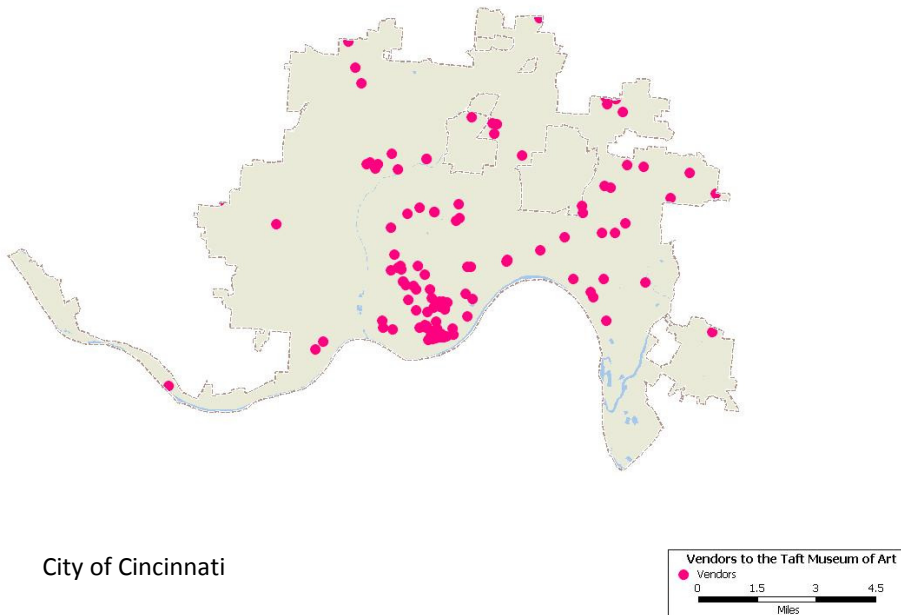
1st Congressional District



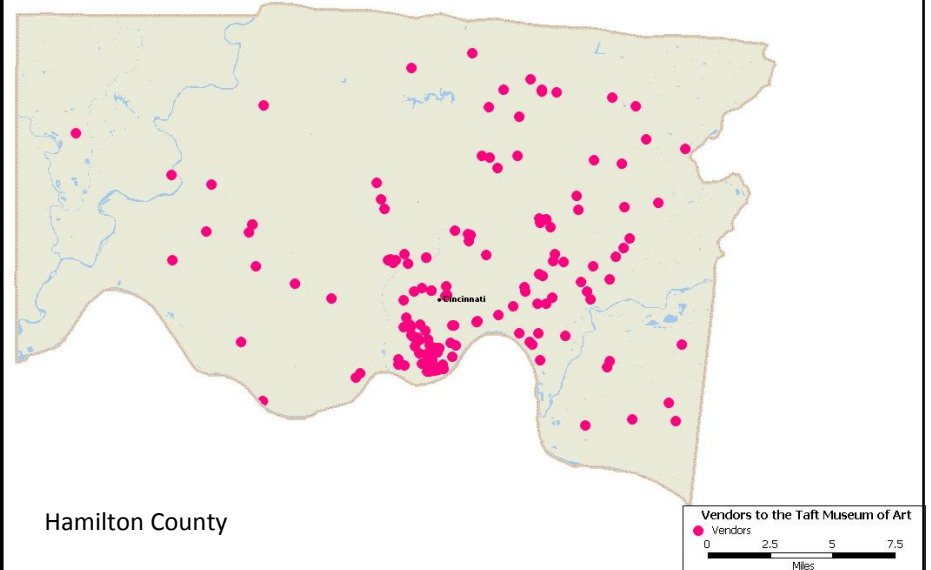
2nd Congressional District



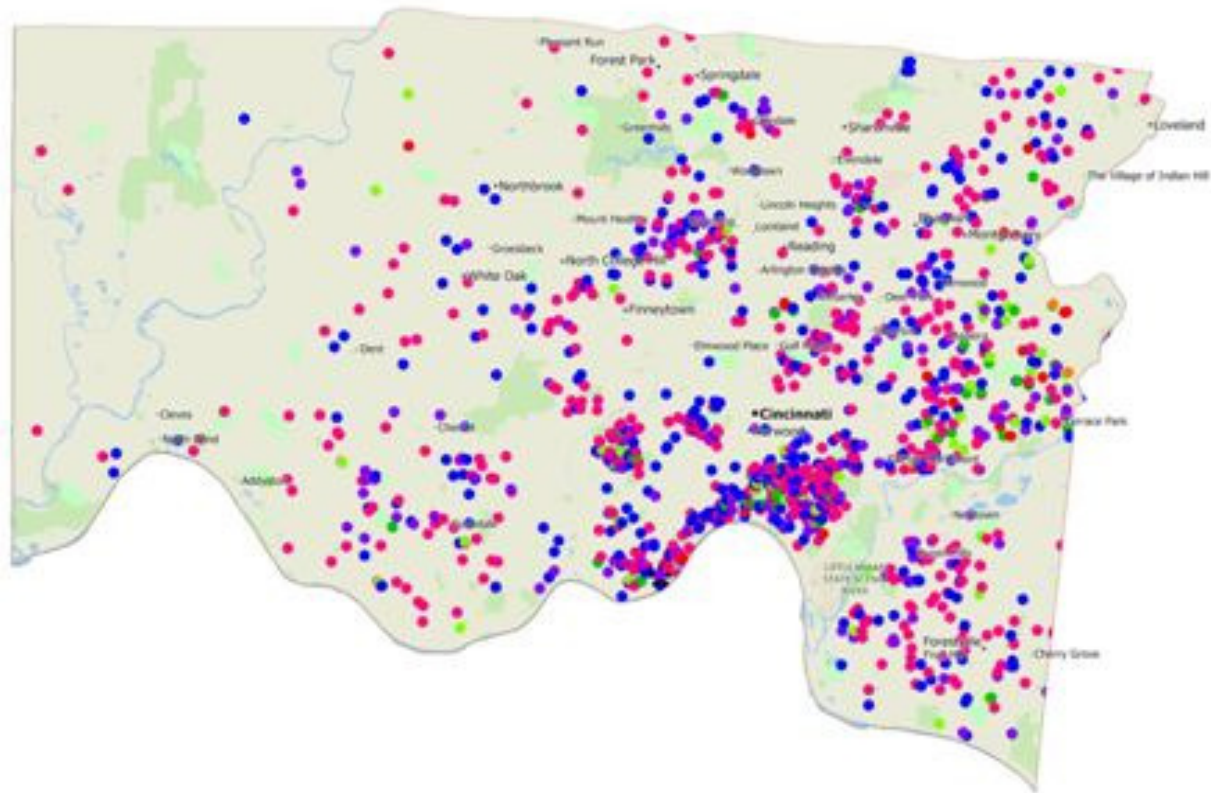
City of Cincinnati



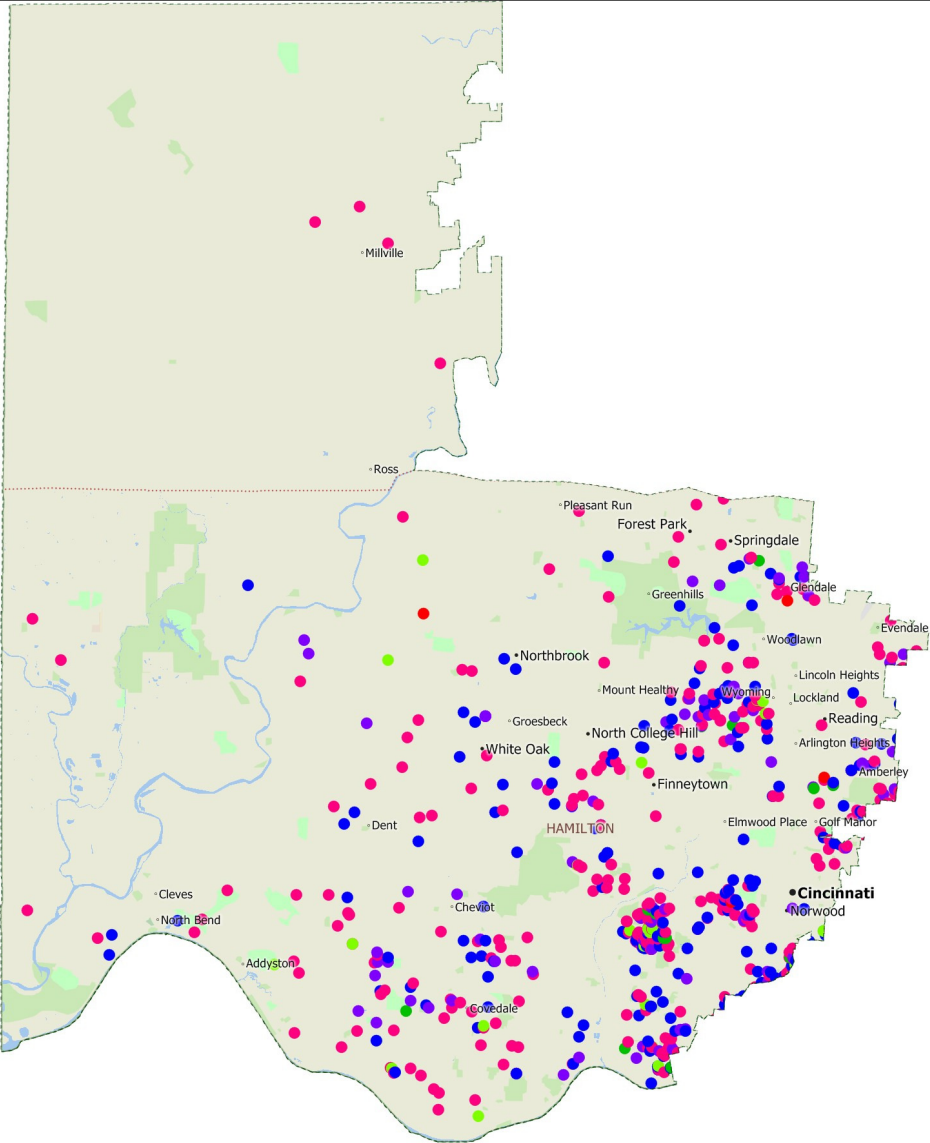
Hamilton County



1,676 individuals and families in Hamilton County are members of the Taft Museum.



575 individuals and families in the 1st Congressional District of Ohio are members of the Taft.



Taft Museum of Art Members

- Taft Museum of Art Members
- Sustaining
- Leadership
- Family/Dual
- Patron
- Fellow
- Life
- Individual

0 1.5 3 4.5 Miles